

Name :

Teacher :

Official Homework Scientific Notation

Created by Mr Lafferty
St. Ninian's High School

This homework covers topics

Score

Basic Number Operations

Context Scientific Notation

Convert to Scientific Notation

Context Scientific Notation

Write in full

Context Scientific Notation

20

Teacher Comments :

Pupil's Comment :

Notes



Practice



1. Carry out the following instructions. (NON - CALCULATOR QUESTION)

(a) $16 - 2.89 + 5.9$

Working :

(b) 40.2×9

Working :

(c) $1500 \div 500$

Working :

(d) 25 % of 900

Working :

(5 marks)

Q2. Write these numbers in scientific notation :-

(a) 639400

(b) 0.00006288

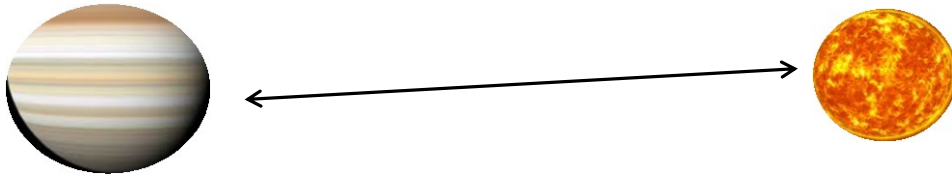
Write these numbers out in full.

(c) 6.212×10^7

(d) 1.414×10^{-5}

(6 marks)

Q3. The distance from a planet to the sun is 5.74×10^6 kilometres .

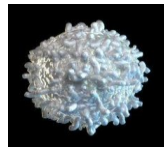


Write your answer in full .

(2 marks)

Q4. There are an estimated 5400000000 white blood cells per litre of blood in the human body.

It is estimated the body contains 5.6 litres of blood.



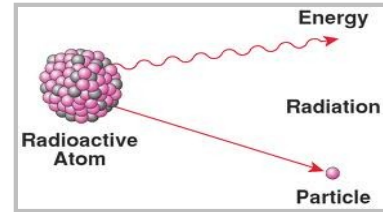
How many white blood cells are in a average human body ?

Write your answer in scientific notation.

(3 marks)

Q5. A particle is radioactive for 0.0000004213 seconds.

Write this number in scientific notation.



(2 marks)

Q6. In the UK every year approximately 15600 million pints of milk are sold.

Write this number in scientific notation.



(2 marks)