

Level D Homework 1

Whole Numbers & Time

1. Write out the number 8429 in words

2. Set down the following and show your working.

a.
$$\begin{array}{r} 5374 \\ + 2927 \\ \hline \end{array}$$

b. $7236 - 2851$

c. 405×100

d. $57\,000 \div 100$

e. 10×42

f.
$$\begin{array}{r} 9213 \\ \times 8 \\ \hline \end{array}$$

g. 4325×6

h. $7 \overline{)392}$

g. $2061 \div 9$

3. There were 4993 people at a concert.
Round this number to the nearest :-

(i) 10

(ii) 100

4. Change these times to 24 hour format :-

a. 7.45am

b. 8.05 pm

c. 11.50pm

5. Write the following in 12 hour format :-

a. 1535

b. 1125

c. 0622

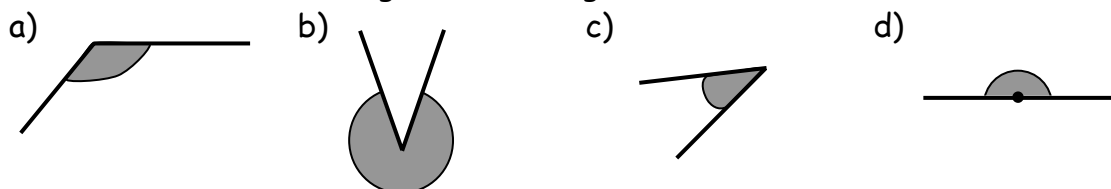
6. Lucy started watching a DVD at 7.40pm.
The film lasted 2 hours and 50 minutes.
At what time did the film end?

Level D Homework 2

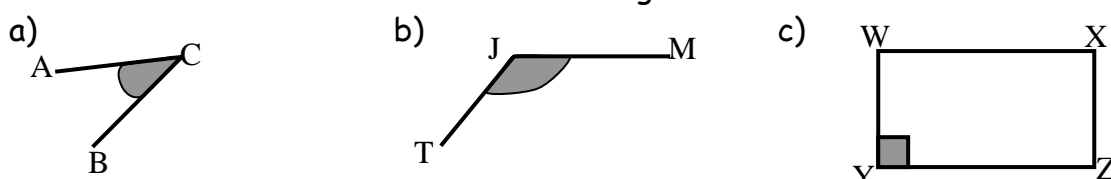
Angles and Decimals

ACUTE, RIGHT, OBTUSE, STRAIGHT, REFLEX

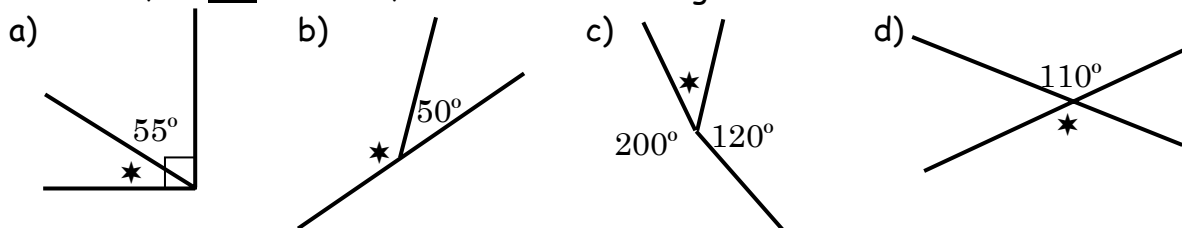
1. Describe each shaded angle below using a word from the list above.



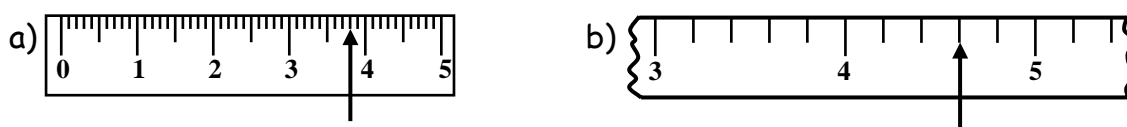
2. Use three letters to name each shaded angle.



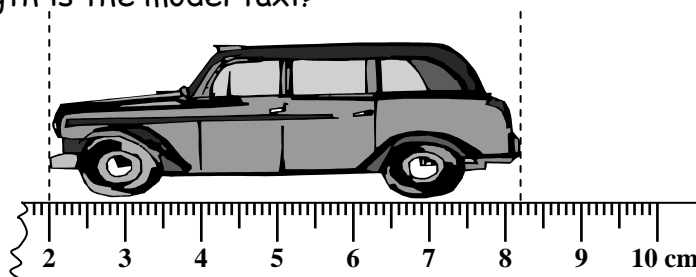
3. Calculate, do not measure, the size of each angle marked with a *.



4. What decimal number is each arrow pointing to?



5. Jack measures the model taxi using his ruler, which has been broken. What length is the model taxi?



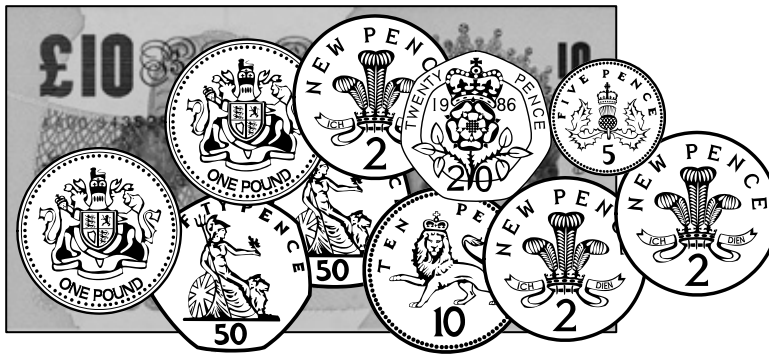
6. Round each measurement to the nearest whole number.

- a) 5.6 cm b) 12.2 mc) 107.9 mm d) 23.82

7. Calculate, show all your working.

- a) $5.87 + 4.52$ b) $12.7 - 6.9$ c) $8 + 6.3$ d) $8 - 6.3$

www.mathsrevision.com
Level D Homework 3
Money

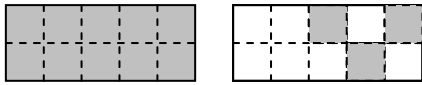


- Jack has the coins and note shown above in his wallet. He buys a DVD for £11.61. Write down the notes and coins he could use to pay £11.61 exactly for the DVD.
- Jason spends £9.99 on a CD and £7.99 on a pre-owned game.
 - How much change should he get if he pays with a £20 note?
 - Give an example of the coins, Jason might get in his change.
- Set out your working and work out the answers:-
 - $£5.67 + £17.89$
 - $£19.73 - £12.89$
 - $£4.97 \times 7$
 - $£19.60 \div 8$
- For each shape, write down what fraction has been shaded.
 - a) b) b) c) c)
- Find:-
 - $\frac{1}{2}$ of 44
 - $\frac{1}{8}$ of 56
 - $\frac{1}{10}$ of 460
- Joe counted 60 cars in his school's car park. He noticed quarter of them were silver, a third were black, a sixth red and the rest white.
 - How many cars were silver?
 - How many cars were black?
 - How many cars were red?
 - How many cars were white?

Level D Homework 4

Decimals and Percentages

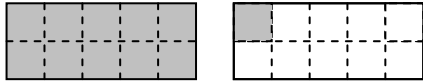
1.



Represents the number 1.3

Write down the numbers represented by the following diagrams.

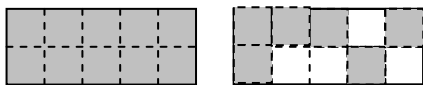
a)



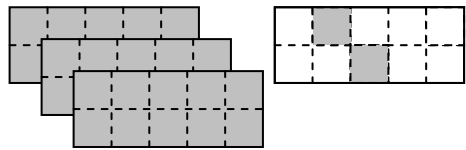
b)



c)



d)



2.

Draw diagrams to represent.

a)

1.8

b)

0.2

c)

2.7

3.

Copy and complete each statement.

a)

7.3 is between 7 and 8. It is closer to _____.

b)

23.8 is between 23 and _____. It is closer to _____.

c)

12.34 is between _____ and 13. It is closer to _____.

4.

Calculate the following.

a)

$3.85 + 2.52$

b)

$8.7 - 4.9$

c)

$£3.89 + £8.56$

5.

Write each percentage as a fraction and as a decimal.

a)

25%

b)

7%

c)

70%

6.

Find:-

a)

25% of £120

b)

50% of £18

c)

10% of 230cm

7.

Jack spent 25% of his £5 pocket money in one afternoon.

How much money did he spend?

Level D Homework 6

Algebra & 2D Shapes

1. Find the value of ☀ in each of the following:-

a) $4 + \text{☀} = 15$

b) $10 - \text{☀} = 4$

c) $2 \times \text{☀} = 20$

d) $\text{☀} \times 4 = 24$



2. Copy each equation and solve to find x :-

a) $x + 5 = 12$

b) $x - 9 = 20$

c) $x \times 5 = 15$

3. Write down the name of each shape below.

